

Our service for your process

Individual | Flexible | Efficient



Spare part
service



Trouble-
shooting



Technical
clarification



Expertise
for gear pumps
in the process



Installation



Maintenance
and repair



Start-up
assistance



On-site
analysis

The pump is the heart of the plant

It keeps the process moving and therefore requires increased attention. This is because regular maintenance is the only way to ensure smooth operation of the system and guarantee long service lives. Gear pumps are the simplest pumps in the genus of positive displacement pumps in terms of their design because they usually have only two moving parts, the gears.

Despite the use of materials of the highest quality and durability, regular inspection of the pumps is elementary. This is because trouble-free operation can only be guaranteed if the

gears, bearings and sealing parts are checked regularly.

Gears and bearings are often exposed to aggressive fluids, which leads to these components being attacked. This causes wear and tear, and the pump no longer achieves the required performance. It is therefore important to regularly check the pumps and replace the wearing parts accordingly to avoid serious damage to the housing.

The established WITTE modular principle

Seals

Depending on the pump type, sealing parts can be used several times. Replacement and conversion to other sealing systems is possible in many cases and can be realized by WITTE.

Housing

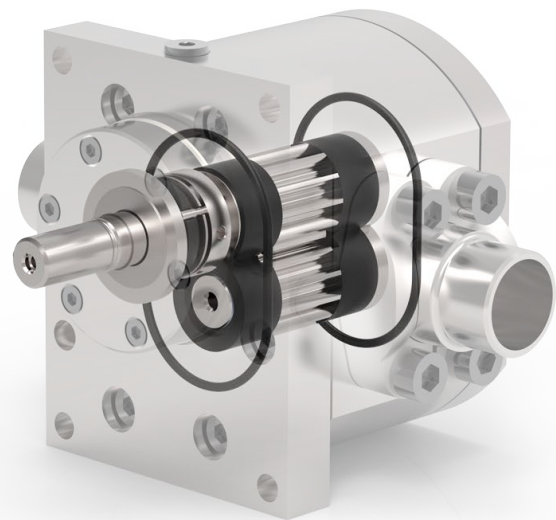
As a rule, the housings are designed so that they can be reused provided there is no damage to the product space. Wear parts such as bearings and shafts can be replaced simply by plug & play.

Gears

Gears and bearings should be checked regularly according to the maintenance specifications. If these are worn or damaged, the pump cannot be operated reliably. Loss of efficiency and irreparable damage could result.

Bearings

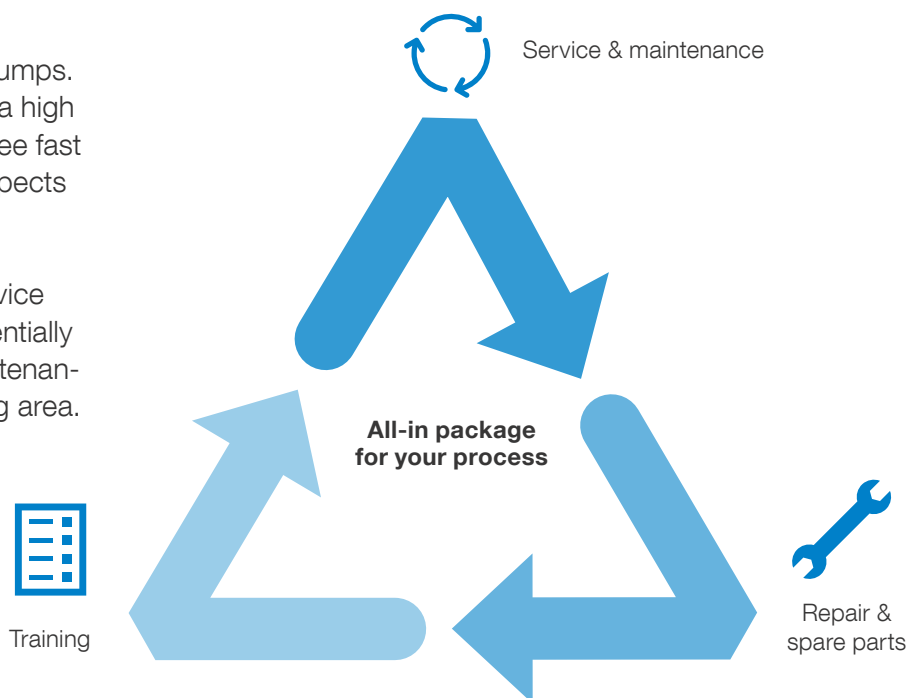
We stock standard friction bearings in a wide range of designs and materials both at our site in Tornesch and at our subsidiaries in the USA and China.



Service | Maintenance | Spare parts

We are specialists in the field of gear pumps. More than 35 years of experience and a high level of employee competence guarantee fast and uncomplicated assistance in all aspects of gear pumps.

We have created a comprehensive service concept for our customers, which essentially consists of the 3 pillars: service & maintenance, repair & spare parts and the training area.



Our service team



Mr. Rathmann

Head of Service
+49 4120 70 65 9 354



Ms. Grabow-Heidmann

Coordination Service & Spare Parts
+49 4120 70 65 9 351



Ms. Leszinski

Coordination Service & Spare Parts
+49 4120 70 65 9 352



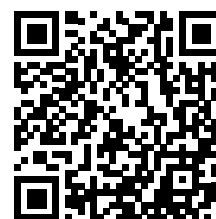
Mr. Averhoff

Field service and repair
+49 4120 70 65 9 353



Herr Heidmann

Field service and repair
+49 4120 70 65 9 0



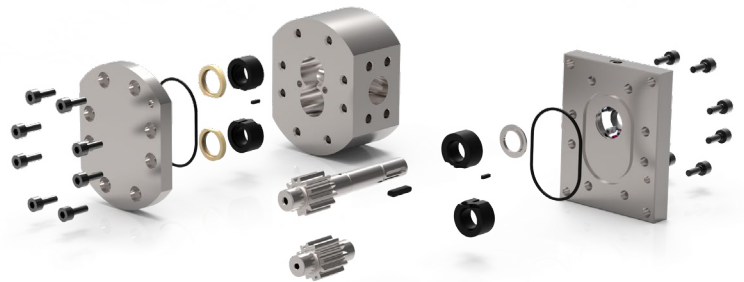
Send request

Spare parts for pumps from other manufacturers

Not only our own pumps are analysed and repaired using the latest technology, but many pumps from other manufacturers have also passed through our assembly halls.

As a rule, standard components from the WITTE modular system can be used for the repair, which are often superior to those of the original manufacturers in terms of quality and grade.

We would be happy to check whether we can optimize the performance and service life of pumps that are already in use for your process.



Worldwide availability of spare parts

We keep a large number of spare parts in stock at our locations in Germany, USA and China. In order to be able to carry out quick and uncomplicated repairs directly on site, service technicians are deployed at our locations who can be on site quickly to remedy the situation if necessary.



WITTE PUMPS & TECHNOLOGY GmbH
 Lise-Meitner-Allee 20
25436 Tornesch bei Hamburg, Deutschland

 +49 (0) 4120/70 65 9-0
 +49 (0) 4120/70 65 9-49

 info@witte-pumps.de
 www.witte-pumps.com